



## Accessibility.

It's very important to me, in my practice, to make it as accessible as possible, for as many people as possible. If you have an accessibility need that I have not covered, please contact me so we can discuss this.

If any of these things are helpful for you, please raise and discuss them with me during the initial consultation, so that we can make a plan for you.

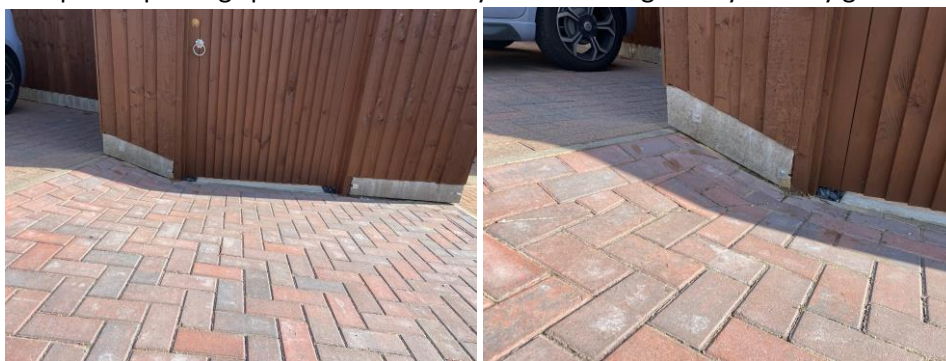
## Therapy Sessions

- I offer both remote and face to face sessions, as well as the option of hybrid sessions, depending on your needs.
- I offer flexibility to cancellations policies, session length and other arrangements, depending on people's unique situations.

**My office was supposed to be wheelchair accessible, however, due to some errors, I cannot guarantee that. Therefore, I can provide you with all the information, and you can decide for yourself, whether you are likely to be able to manage this. You are more than welcome to ask me anything about this, if you wish.**

## Parking

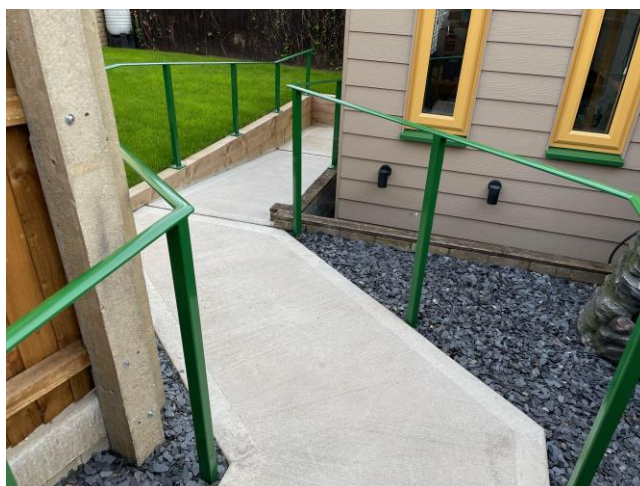
- There is a specific parking space for clients very close to the gateway into my garden.



- My driveway is almost split level. There is a slope, at the very corner of the driveway, just where the doorbell is. I am unsure how accessible this would be for a wheelchair. I am also unsure whether a wheelchair could get behind a car parked on the drive- this would depend on where you parked and how big your car was. We could discuss this if you felt the environment was accessible enough for you.

## Getting to my Office

- There is a ramp, that meets the accessibility laws and requirements, that has hand rails all the way down.



### The Office itself

- There is enough space within the office for someone to access it with a wheelchair, or crutches.
- The lights are adjustable in brightness or colour, or can be turned off if they are too bright.
- I provide a range of fidgets for anyone to use within a session.
- There is a notepad and pen available for anyone who wants or needs to write anything down within the session.
- If we are using a workbook, then this can be printed on a colour that is not white (a colour that works for you) if this makes it easier to read.
- I can make a lot of things that we may do, accessible; we would just talk this through.

### Toilets

- My office is a garden office. There is access to a toilet for urgent situations and emergency situations only. This will involve you going out of the gate you came in, and round to my front door- I will then let you in that way.
- There are three steps down to my front door. There are no entrances into my house where there are no steps- these are the most accessible steps.

